

Emergency Preparedness

- Washington Disasters
- Personal Preparedness
- Business Preparedness



Officer Jennifer Franklin
Mercer Island Emergency Preparedness Officer
9611 SE 36th ST.
Mercer Island, WA 98040
206-793-8646 Cell
206-275-7905 Desk
206-275-7941 Fax
jennifer.franklin@mercergov.org

Emergency Preparedness Website www.mercergov.org/emergencyprep

Disasters that can effect our area.

- Disasters are relatively unexpected, emergency personnel may be overwhelmed, lives, health, and the environment are endangered.
- Disasters consist of Natural, Manmade, Technological.

Natural: Earthquakes, winter storms, landslides, Seiche, volcanoes, flooding, (pandemics), power outages.

Manmade: Terrorist attacks, hazardous material spills, large scale accidents, etc.

Technological



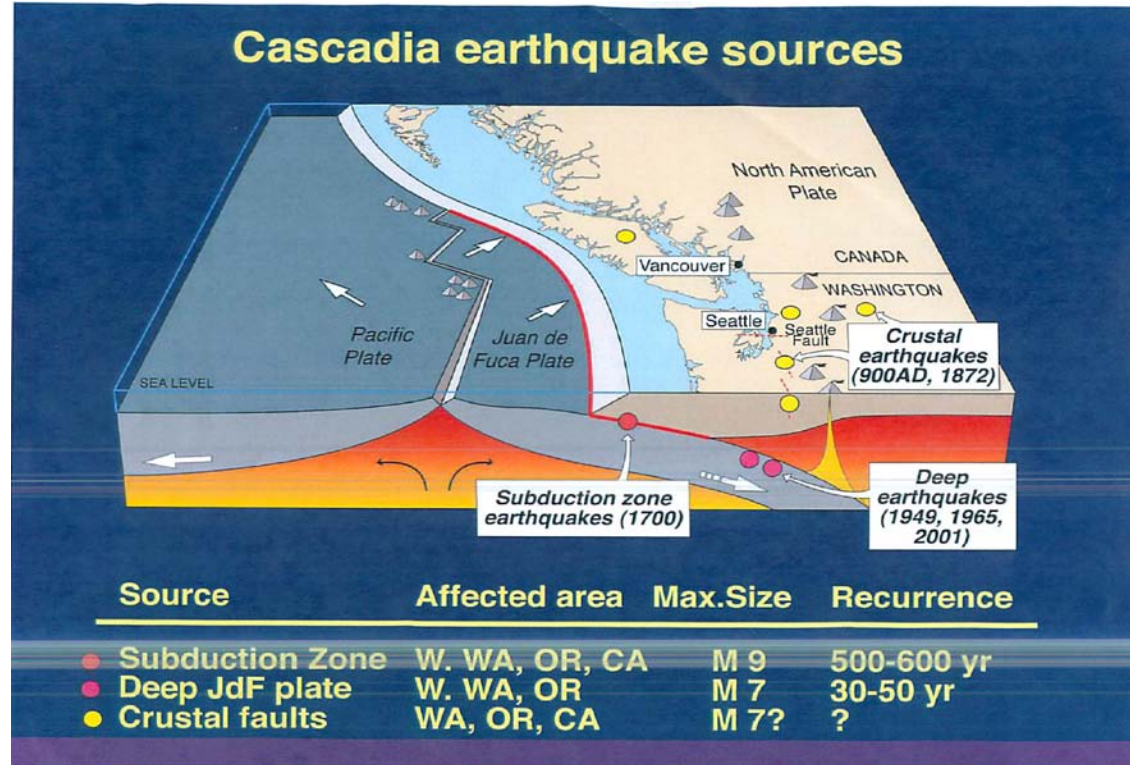
An Earthquake Is . . .

A sudden slipping or movement of a portion of the Earth's crust, caused by a sudden release of stresses, usually less than 25 miles below the surface.

Cascadia Subduction Zone - (Juan de Fuca Plate diving under the North American Plate) Mega Quakes (like Chile) happens approx. every 300 years. Last one struck in 1700

Deep Juan de Fuca Plate – Happens every 30 -50 years (1949, 1965, 2001)

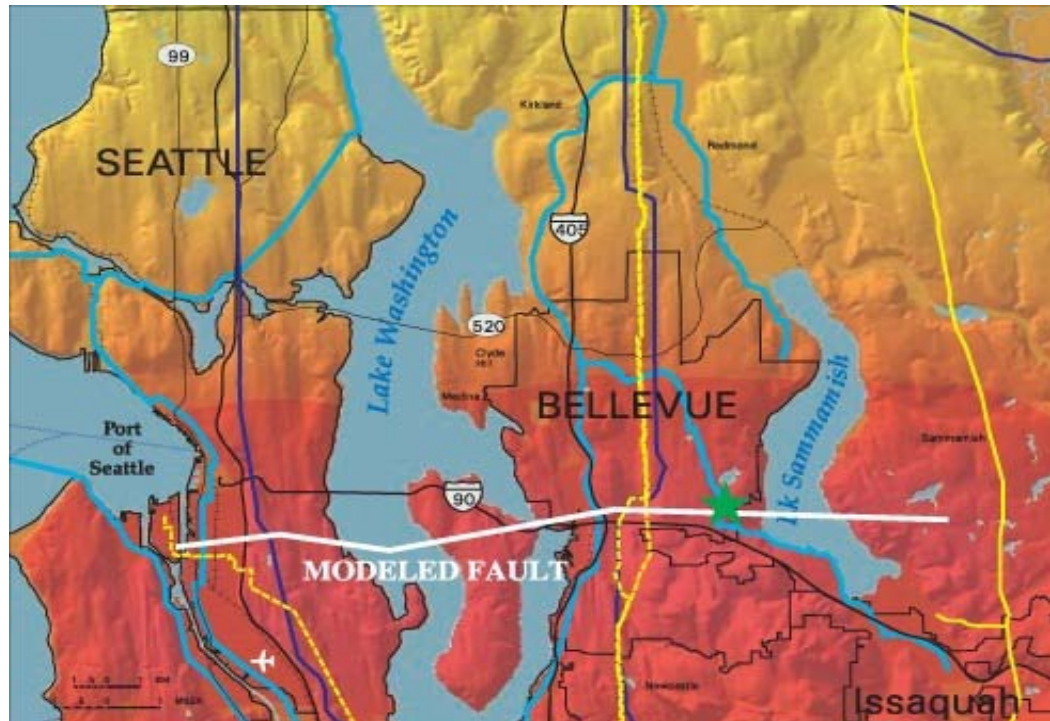
Crustal Faults (Seattle Fault Zone)– (900 AD, 1872)



US Geological Survey by Research Geophysicist Joan Gomberg

Seattle Fault Earthquake

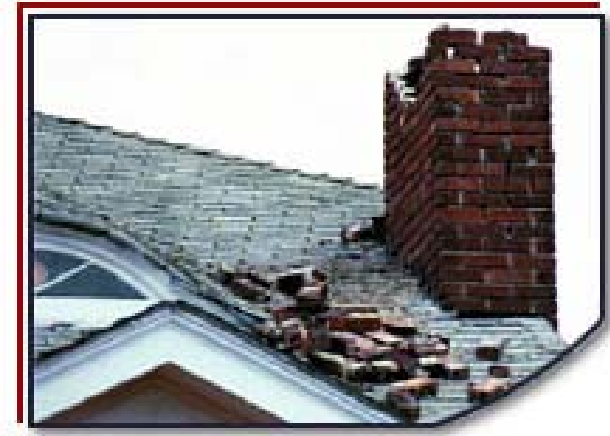
- ❑ Fault line runs from Harbor Island to the base of the Cascades, Mercer Island is in the fault's direct path
 - ❑ Approximately 14 miles
 - ❑ Shallow fault line
 - ❑ Potential for significant ground movement



KCECC Sound Shake 08

Effects on Infrastructure

- Inability to assess damage accurately
- Ambulances prevented from reaching victims
- Police prevented from reaching areas of civil unrest
- Fire departments prevented from getting to fires
- Interruption to the flow of needed supplies
- Damaged hospitals, unable to function normally
- Increased risk of damage from falling debris
- Victims unable to call for help
- Coordination of services hampered
- Loss of utilities
- Increased risk of fire or electrical shock
- Loss of contact between victims and service providers
- Inadequate water supply
- Increased risk to public health



**These are several of the hazards;
now what can we do to help prepare ourselves and others?**

Home and Workplace Preparedness

Mercer Island Preparedness Booklet



Home Preparedness:

if you are off Island, have you planned for someone to take care of your kids/ family if you can't get back on the Island?

- Kit in your house, car, workplace?
- Wrench on gas meter? Know how to turn off your utilities, water?
- Fire Extinguishers in house? Smoke detectors working?

Business Preparedness:

(You and your employees may have to shelter in place for up to 7 days after a disaster – If your family lives off Island are they prepared to be without you? Can you take care of your employees for 7 days? How about yourself?

- **90% of Businesses that fail to open within 5 days eventually close (FEMA)**
- Business Preparedness www.ready.gov/business

Community Preparedness (CEMP)

City Emergency Management Plan

- Assigns responsibility to organizations and individuals – Most plans follow an ICS (Incident Command System) structure
- Sets forth lines of authority
- Describes how people and property will be protected
- Identifies personnel, equipment, facilities, supplies, and other resources
- Identifies Roles for Community Leaders
- Enact necessary emergency measures pursuant to RCW 38.52, ratify proclamations of emergencies, house dignitaries, appropriate funding, policy direction, provide visible leadership and ensure public is informed, help resolve conflicts between local agencies, approve mutual aid agreements.....stay out of the EOC!

NOTES & QUESTIONS.....